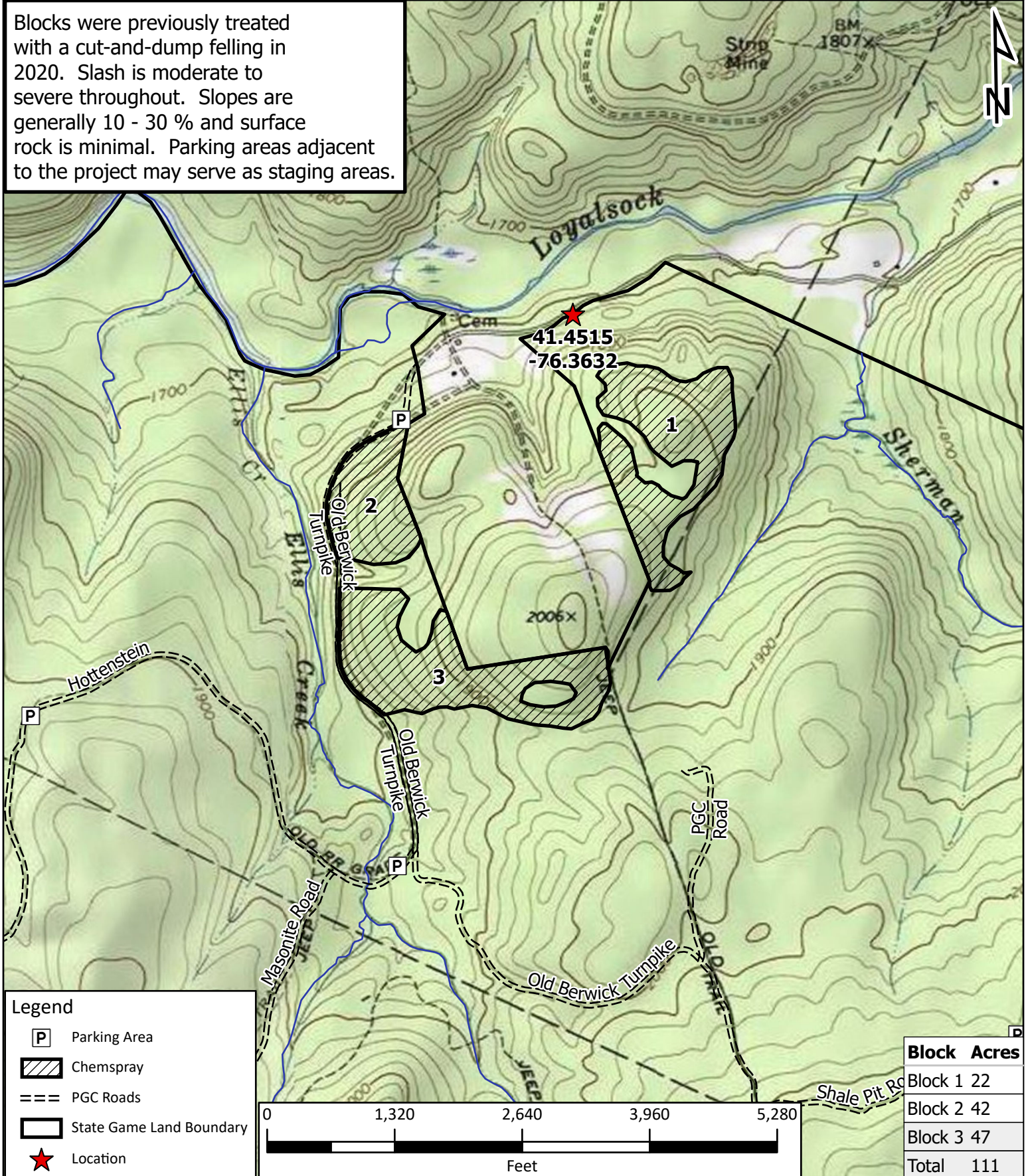


# Maintenance Man Broadcast Herbicide FY 23



Blocks were previously treated with a cut-and-dump felling in 2020. Slash is moderate to severe throughout. Slopes are generally 10 - 30 % and surface rock is minimal. Parking areas adjacent to the project may serve as staging areas.



**Legend**

- P Parking Area
- Chemspray
- PGC Roads
- State Game Land Boundary
- ★ Location

Block	Acres
Block 1	22
Block 2	42
Block 3	47
<b>Total</b>	<b>111</b>

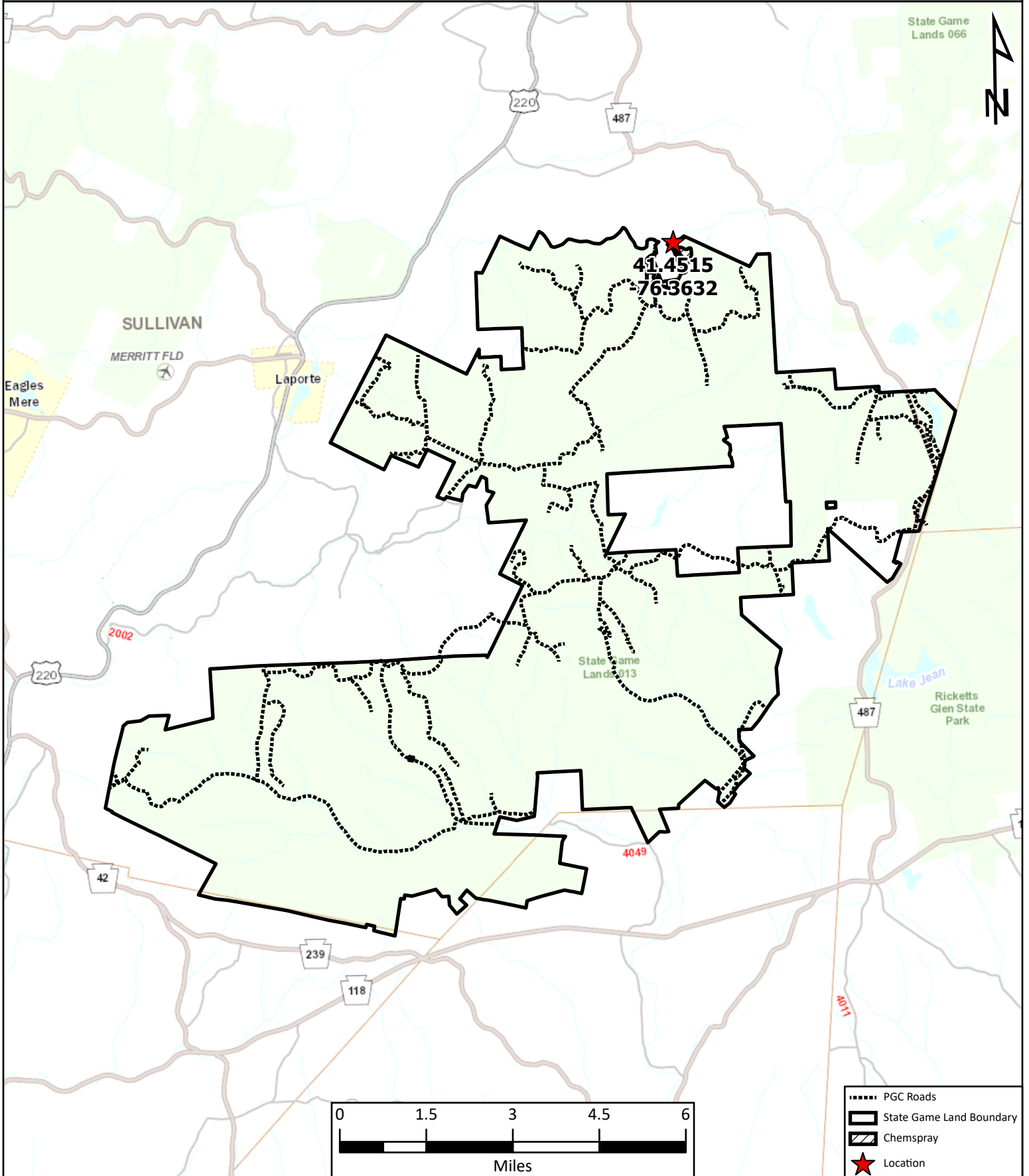


SGL 013  
Sullivan County  
Cherry Township  
Forester: E.Delp

# Location Map

## Maintenance Man Broadcast Herbicide

### FY 23

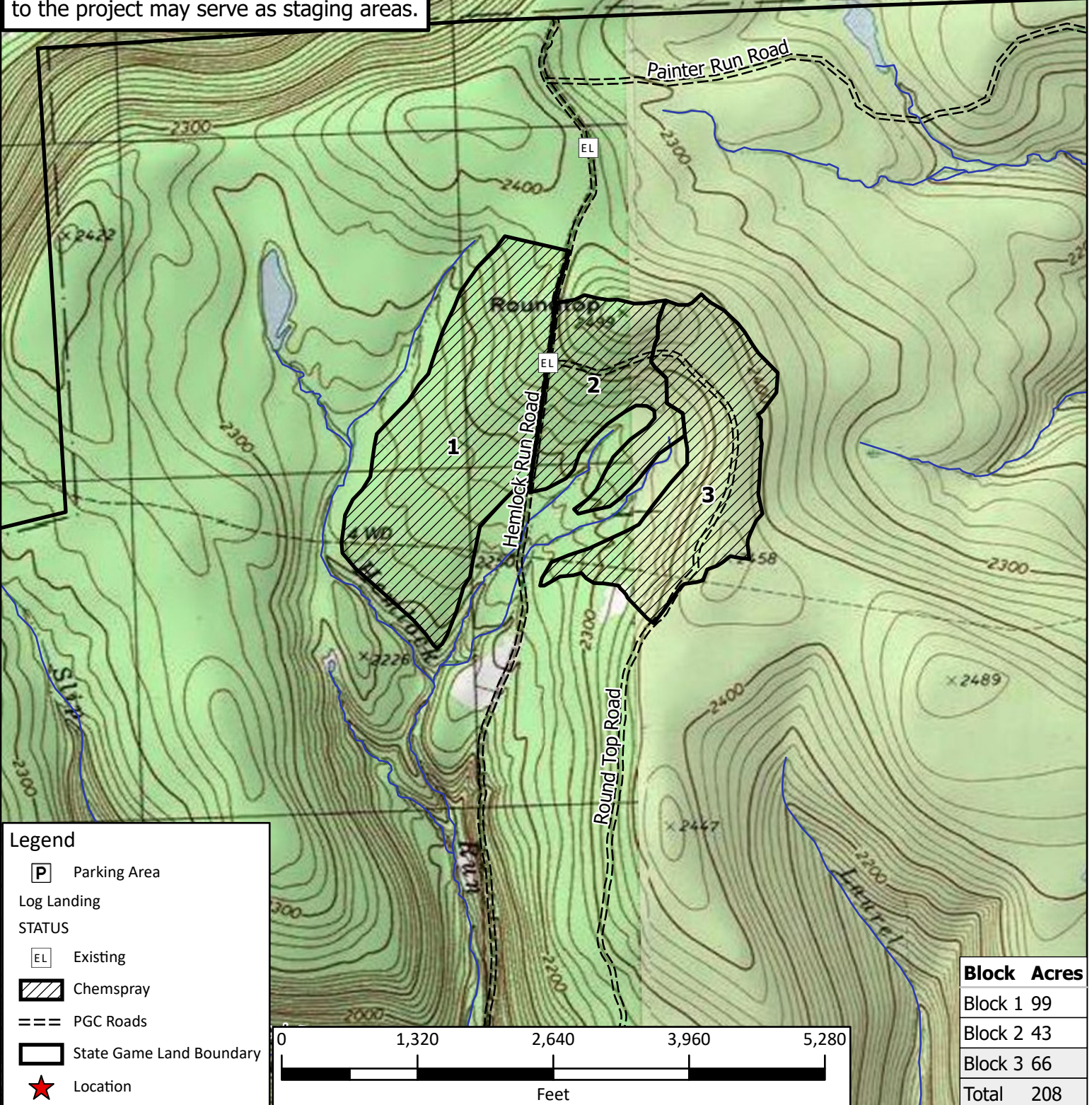




# Graces Arrival Broadcast Herbicide FY 23



Blocks were previously treated with a cut-to-length shelterwood harvest in 2019. Slash is moderate Slopes are generally 5 - 20 % and surface rock is minimal. Log landings adjacent to the project may serve as staging areas.



Block	Acres
Block 1	99
Block 2	43
Block 3	66
<b>Total</b>	<b>208</b>

**Legend**

- Parking Area
- Location
- Log Landing
- STATUS
- Existing
- Chemspray
- PGC Roads
- State Game Land Boundary

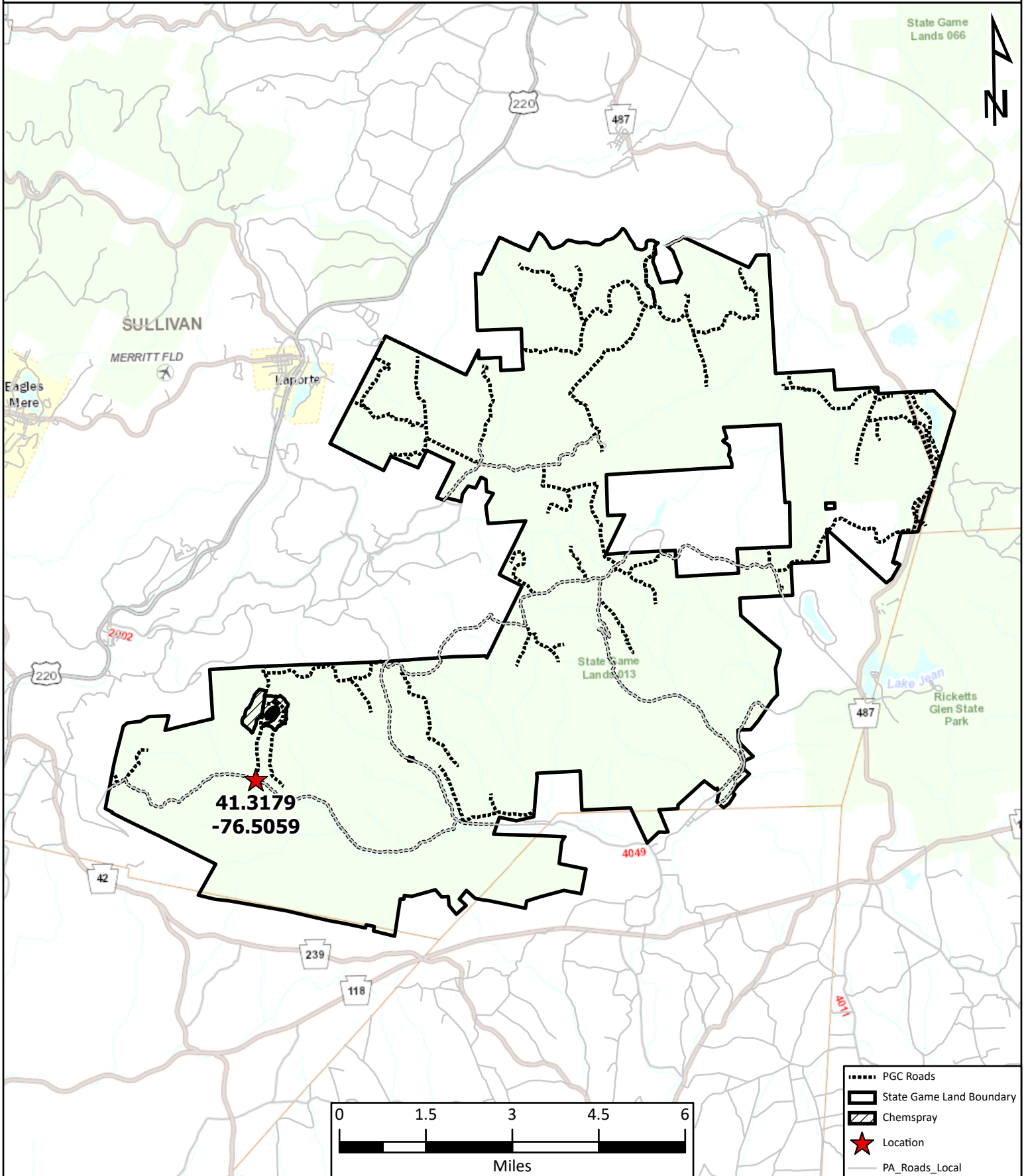


SGL 013  
Sullivan County  
Davidson Township  
Forester: E.Delp

# Location Map

## Graces Arrival Broadcast Herbicide

### FY 23



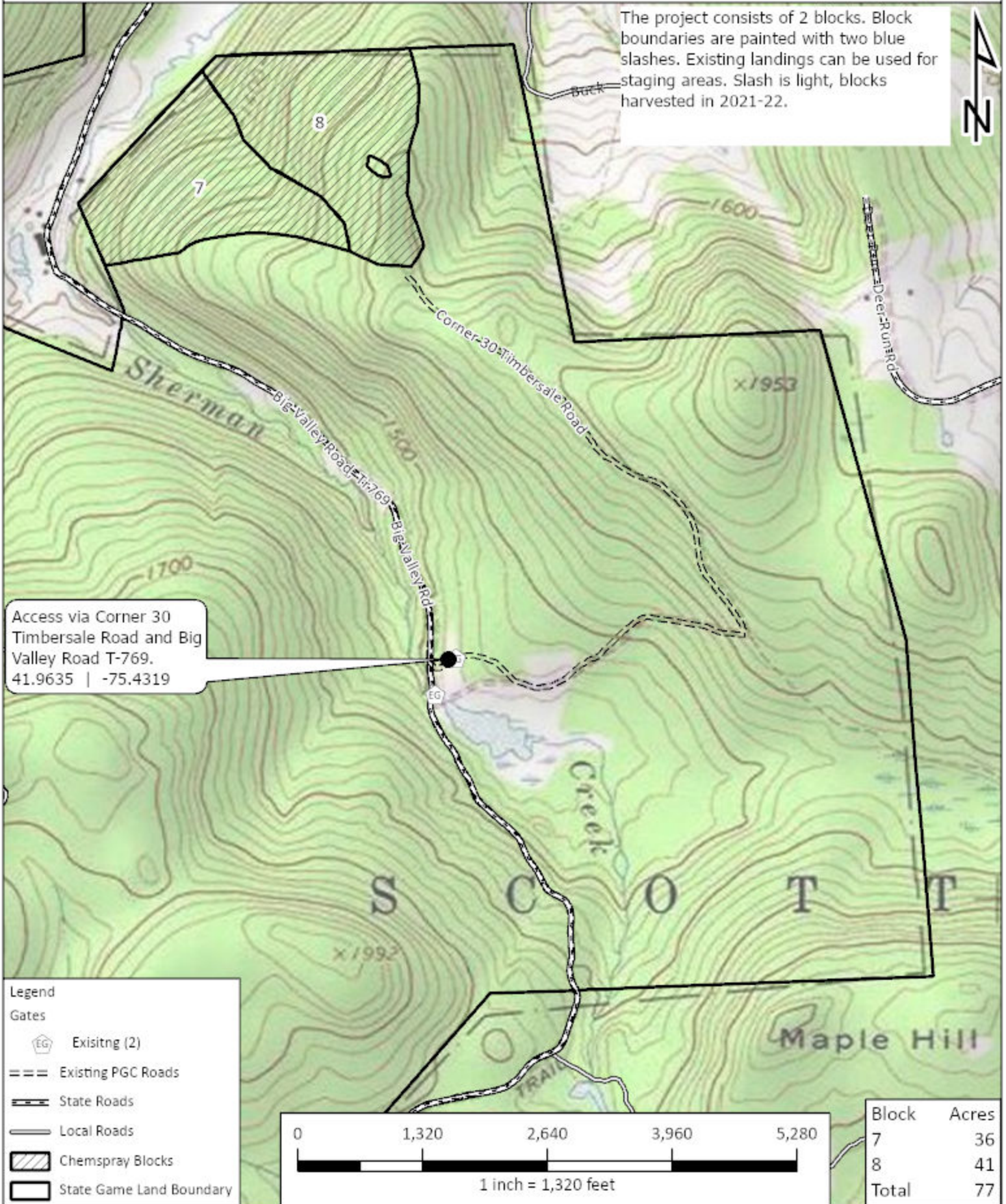


SGL: 070  
 County(s): Wayne  
 Township(s): Scott  
 Created by: dlenzi

# Project Map Sherman Creek 070-2023-01



The project consists of 2 blocks. Block boundaries are painted with two blue slashes. Existing landings can be used for staging areas. Slash is light, blocks harvested in 2021-22.

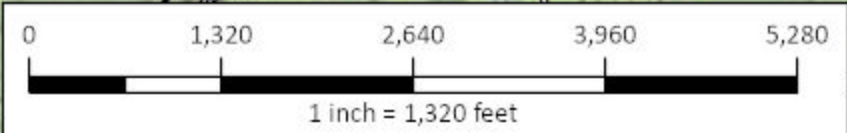


Access via Corner 30  
 Timbersale Road and Big  
 Valley Road T-769.  
 41.9635 | -75.4319

**Legend**

**Gates**

- Existing (2)
- Existing PGC Roads
- State Roads
- Local Roads
- Chemspray Blocks
- State Game Land Boundary





SGL: 70  
County(s): Wayne  
Township(s): Scott  
Created by: dlenzi

# Location Map Sherman Creek 070-2023-01

